

Technowood®

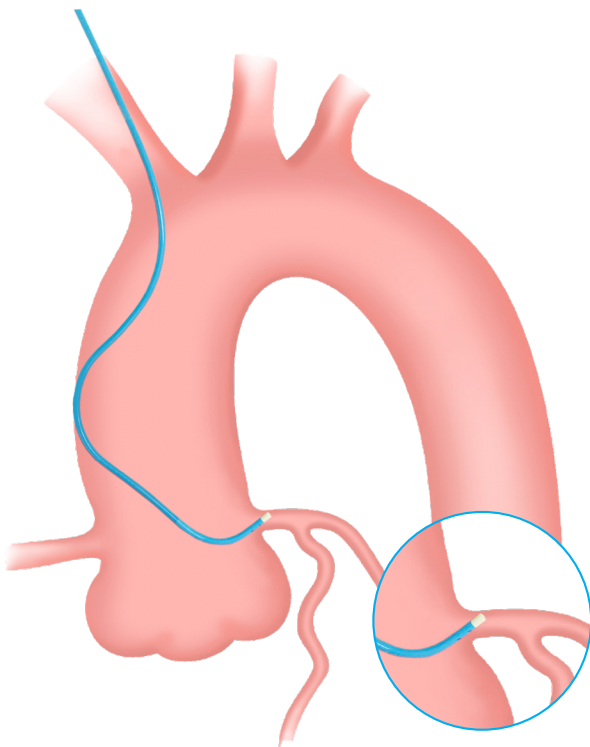
SoftNAV CATHETER

Judkins Safety

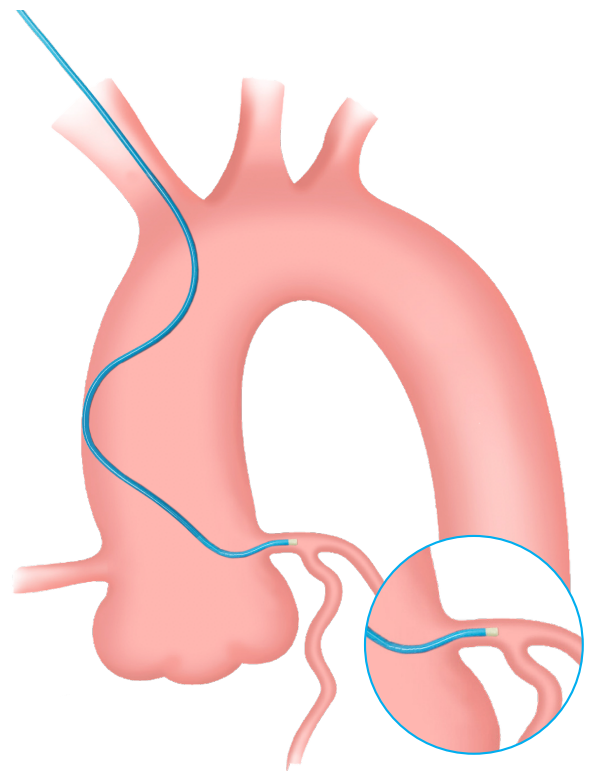


UNIQUE TIP SHAPE

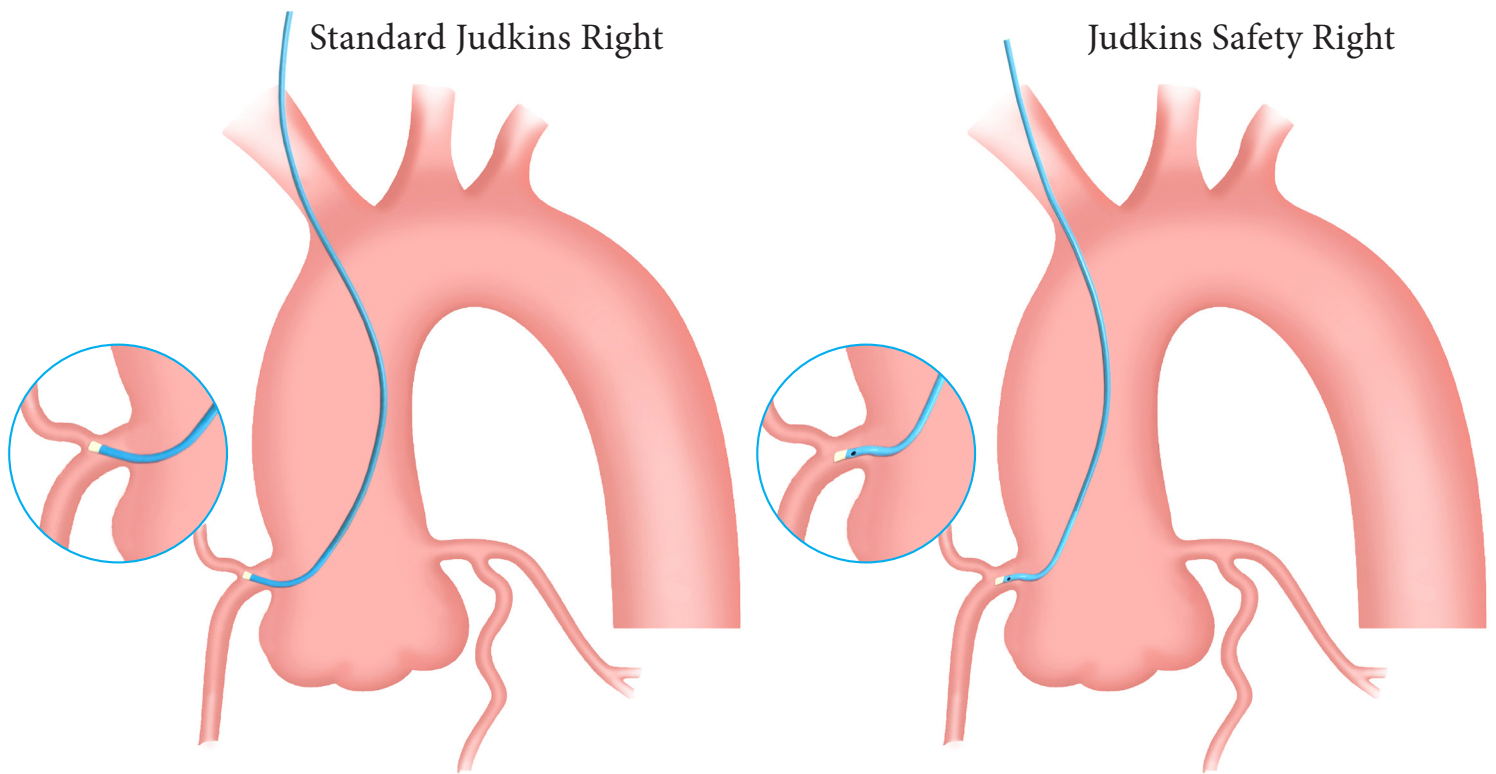
The slightly outward distal curve makes coaxial engagement easier and quicker. The tip does not point toward the arterial walls, lessening the risk of vessel injury.



Standard Judkins Left



Judkins Safety Left



Engaging an inferior right coronary artery with a regular Judkins right involves a risk of deep seating and selective engagement of the conus artery that can lead to ventricular fibrillation. The Judkins Safety right has a tip shaped downward which follows the natural curve of the vessel, reducing the risk of vascular damage.

SIDE HOLES

In the case of catheter wedging, the side holes will allow flow of contrast media, alerting the physician to change the catheter position. Proper coaxial engagement will not trigger this feature.

HYDROPHILIC COATING

The decreased frictional resistance makes it easier to pass through narrow, tortuous vessels during TRA. It also minimizes the risk of thromboembolism and radial spasm.

2 BODY TYPES

The FL catheter's flexible body can easily pass through the curvatures of the blood vessels, lessening the risk of contact trauma to the patient.

The SL catheter's braided stiff shaft was designed to give 1:1 torque response for better maneuverability and control, especially in tortuous vessels.

SHAPE	FL		SL		LENGTH cm
	4Fr	5Fr	4Fr	5Fr	
JL3.5	SVH3-FL418SH	SVH3-FL518SH	SVH3-SL418SH	SVH3-SL518SH	105
JL4.0	SVH3-FL420SH	SVH3-FL520SH	SVH3-SL420SH	SVH3-SL520SH	105
JR3.5	SVH3-FL419SH	SVH3-FL519SH	SVH3-SL419SH	SVH3-SL519SH	105
JR4.0	SVH3-FL421SH	SVH3-FL521SH	SVH3-SL421SH	SVH3-SL521SH	105